




**AGM Battery
(12V75AH)**
B00409/BAT24-AGM-75A
Applications

- Electric tools
- Vehicle in place of walking
- Lawn mowers
- Golf trolleys and golf cart
- Portable apparatus, lights and instruments
- Electric toys
- Illumination light
- Fire alarms
- Portable power
- Wheelchairs
- Medical equipment

Specification	
Nominal voltage	12V
Nominal capacity (20h)	75 Ah
Dimensions	Length : 259 ± 2 mm (10.2 inches) Width : 168 ± 2 mm (6.61 inches) Container height : 208 ± 2 mm (8.19 inches) Total height (with terminal) : 214 ± 2 mm (8.43 inches)
Weight	Approx. 22.3 kg (49.2 lb)
Terminal	T6
Container material	ABS
Rated capacity	80.4 Ah/4.02 A (20h, 1.80V/cell, 25°C/77°F) 75.0 Ah/7.50 A (10h, 1.80V/cell, 25°C/77°F) 65.8 Ah/13.2 A (5h, 1.75V/cell, 25°C/77°F) 59.6 Ah/19.9 A (3h, 1.75V/cell, 25°C/77°F) 48.5 Ah/48.5 A (1h, 1.60V/cell, 25°C/77°F)
Max. discharge current	900 A (5s)
Internal resistance	Approx. 6.6 mΩ
Operating temperature range	Discharge : -15~50°C (5~122°F) Charge : 0~40°C (32~104°F) Storage : -15~40°C (5~104°F)
Nominal operating temp. range	25 ± 3°C (77 ± 5°F)
Cycle use	Initial charging current less than 22.5 A. Voltage 14.4V~15.0V at 25°C (77°F) Temp. Coefficient -30mV/°C
Standby use	No limit on initial charging current voltage 13.5V~13.8V at 25°C (77°F) Temp. Coefficient -20mV/°C
Capacity according to temperature	40°C (104°F) : 103% 25°C (77°F) : 100% 0°C (32°F) : 86%
Self discharge	CG Power AGM series batteries may be stored for up to 6 months at 25°C (77°F) and then a freshening charge is required. For higher temperatures the time interval will be shorter.

Constant Current Discharge (Amperes) at 25°C (77°F)

F.V/Time	10 min	15 min	20 min	30 min	45 min	1 h	2 h	3 h	4 h	5 h	6 h	8 h	10 h	20 h
1.85V/cell	109.8	92.4	80.7	58.1	46.1	37.4	23.3	18.1	14.7	11.9	10.4	8.50	7.08	3.98
1.80V/cell	140.3	111.6	95.4	68.6	53.7	41.9	25.4	19.5	15.7	12.8	11.2	9.02	7.50	4.02
1.75V/cell	154.2	121.9	102.7	71.2	55.7	43.9	26.3	19.9	16.0	13.2	11.5	9.17	7.58	4.06
1.70V/cell	168.0	130.2	107.9	74.1	57.9	45.3	27.4	20.4	16.5	13.5	11.7	9.30	7.65	4.13
1.65V/cell	181.4	138.4	114.6	78.1	59.4	46.8	28.1	21.3	17.0	13.9	12.0	9.45	7.81	4.19
1.60V/cell	196.9	148.1	122.1	82.5	61.9	48.5	29.1	22.0	17.6	14.3	12.2	9.54	7.89	4.21

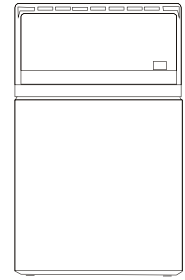
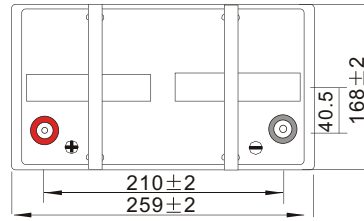
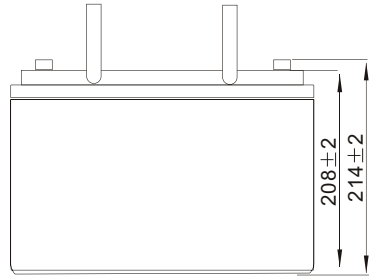
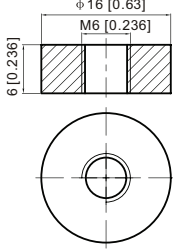
Constant Power Discharge (Watts/cell) at 25°C (77°F)

F.V/Time	10 min	15 min	20 min	30 min	45 min	1 h	2 h	3 h	4 h	5 h	6 h	8 h	10 h	20 h
1.85V/cell	204.9	174.2	153.9	111.6	89.3	72.7	45.3	35.4	28.8	23.4	20.6	16.8	14.0	7.97
1.80V/cell	258.3	207.3	179.1	130.1	103.0	80.9	49.2	37.9	30.6	25.1	22.0	17.8	14.8	8.03
1.75V/cell	280.3	224.3	191.1	134.4	106.3	84.4	50.9	38.5	31.2	25.7	22.6	18.1	15.0	8.10
1.70V/cell	301.3	237.7	199.7	139.4	110.3	86.8	52.7	39.5	31.9	26.3	23.0	18.3	15.1	8.24
1.65V/cell	322.8	251.1	211.1	146.4	112.6	89.4	54.1	41.1	33.0	27.0	23.5	18.6	15.4	8.34
1.60V/cell	344.5	265.4	222.6	153.0	116.3	91.8	55.5	42.1	33.9	27.7	23.9	18.8	15.6	8.37

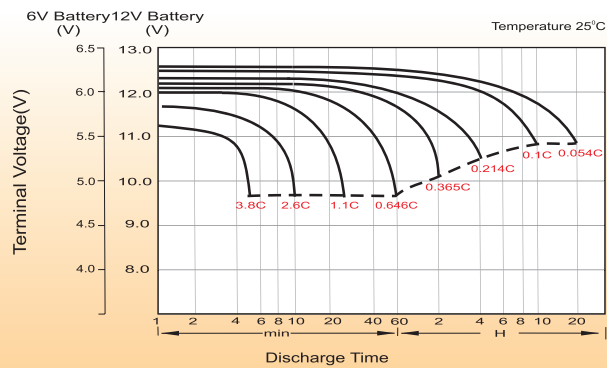
AGM Battery (12V75AH) | B00409/BAT24-AGM-75A

Dimensions

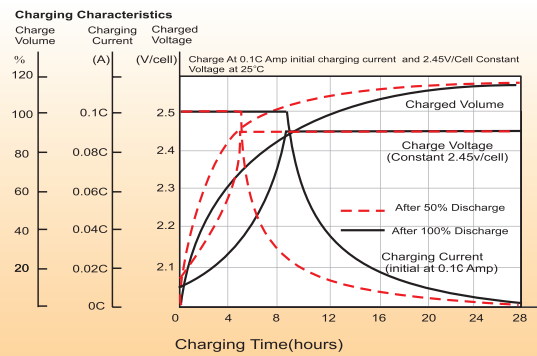
■ T6 Terminal
Unit: mm [inches]



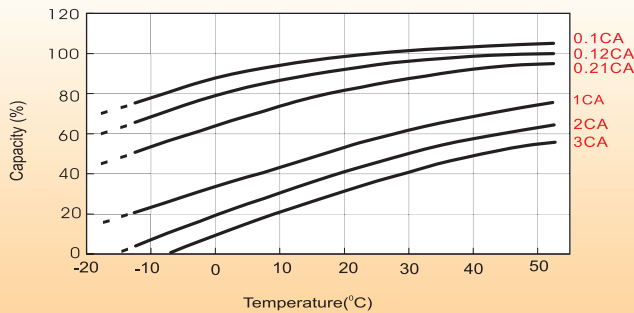
Discharge Characteristics



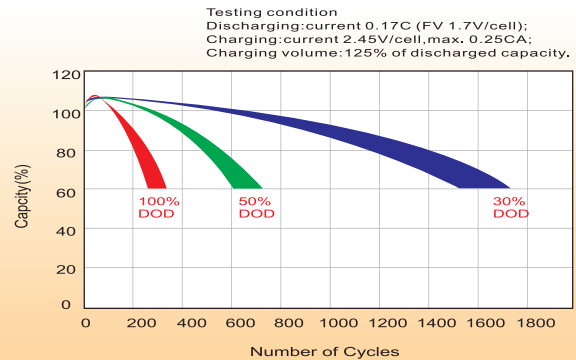
Charging Characteristics (cycle use)



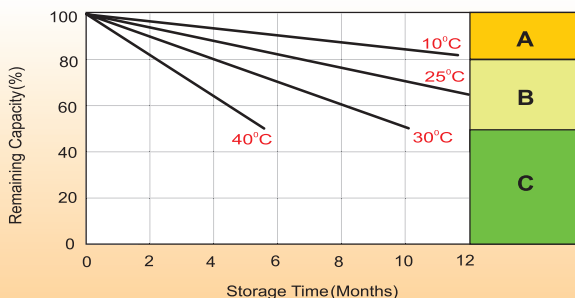
Temperature Effects in Relation to Battery Capacity



Cycle Life in Relation to Depth of Discharge



Self Discharge Characteristics



- A** No supplementary charge required
(Carry out supplementary charge before use if 100% capacity is required.)
- B** Supplementary charge required before use. Optional charging way as below:
 1. Charged for above 3 days at limited current 0.25CA and constant voltage 2.25V/cell.
 2. Charged for above 20 hours at limited current 0.25CA and constant voltage 2.45V/cell.
 3. Charged for 8~10 hours at limited current 0.05CA.
- C** Supplementary charge may often fail to recover the capacity.
The battery should never be left standing till this is reached.