




**AGM Battery
(12V100AH)**

B00417/BAT31-AGM-100A

Applications

- Electric tools
- Vehicle in place of walking
- Lawn mowers
- Golf trolleys and golf cart
- Portable apparatus, lights and instruments
- Electric toys
- Illumination light
- Fire alarms
- Portable power
- Wheelchairs
- Medical equipment

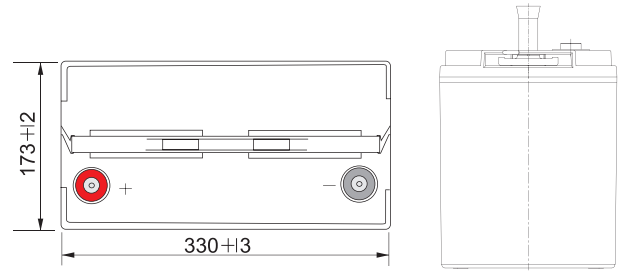
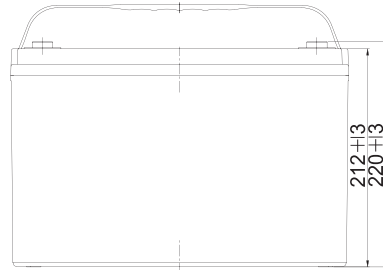
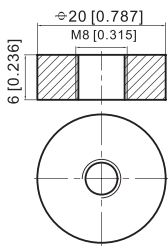
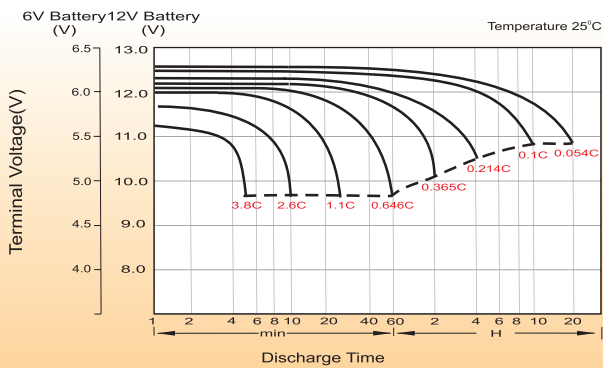
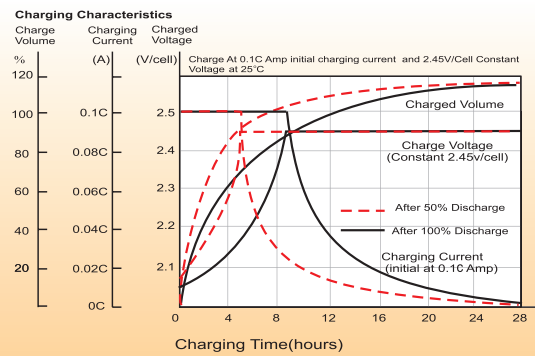
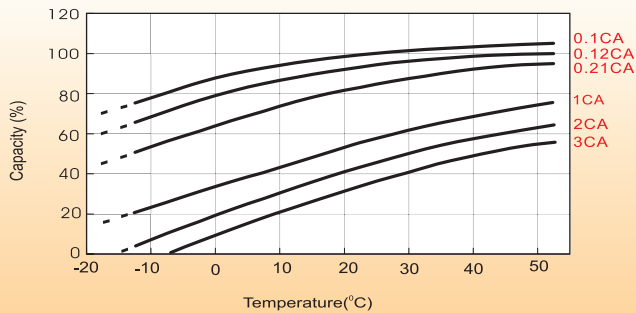
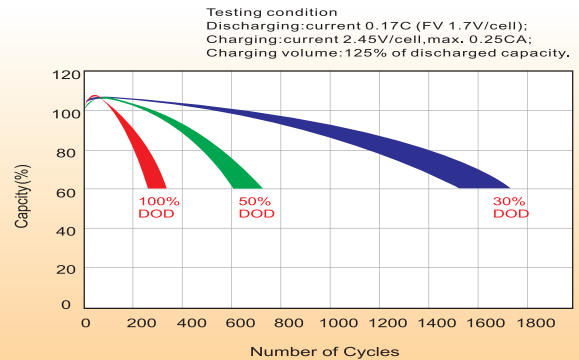
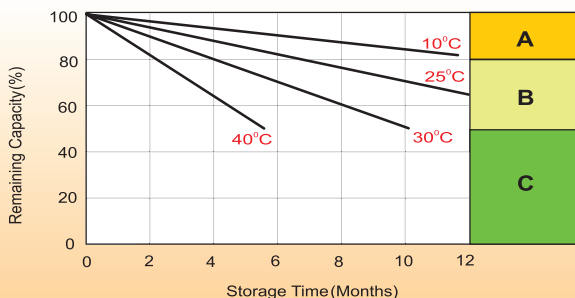
Specification	
Nominal voltage	12V
Nominal capacity (20h)	100Ah
Dimensions	Length : 330 ± 3 mm (12.99 inches) Width : 173 ± 2 mm (6.81 inches) Container height : 212 ± 3 mm (8.35 inches) Total height (with terminal) : 220 ± 3 mm (8.66 inches)
Weight	Approx. 30.6 kg (67.5 lb)
Terminal	T11
Container material	ABS
Rated capacity	107.2 Ah/5.36 A (20h, 1.80V/cell, 25°C/77°F) 100.0 Ah/10.0 A (10h, 1.80V/cell, 25°C/77°F) 87.7 Ah/17.5 A (5h, 1.75V/cell, 25°C/77°F) 79.5 Ah/26.5 A (3h, 1.75V/cell, 25°C/77°F) 64.6 Ah/64.6 A (1h, 1.60V/cell, 25°C/77°F)
Max. discharge current	1200A (5s)
Internal resistance	Approx. 4.9mΩ
Operating temperature range	Discharge : -15~50°C (5~122°F) Charge : 0~40°C (32~104°F) Storage : -15~40°C (5~104°F)
Nominal operating temp. range	25 ± 3°C (77 ± 5°F)
Cycle use	Initial charging current less than 30A. Voltage 14.4V~15.0V at 25°C (77°F) Temp. Coefficient -30mV/°C
Standby use	No limit on initial charging current voltage 13.5V~13.8V at 25°C (77°F) Temp. Coefficient -20mV/°C
Capacity according to temperature	40°C (104°F) : 103% 25°C (77°F) : 100% 0°C (32°F) : 86%
Self discharge	CG Power AGM series batteries may be stored for up to 6 months at 25°C (77°F) and then a freshening charge is required. For higher temperatures the time interval will be shorter.

Constant Current Discharge (Amperes) at 25°C (77°F)

F.V/Time	10 min	15 min	20 min	30 min	45 min	1 h	2 h	3 h	4 h	5 h	6 h	8 h	10 h	20 h
1.85V/cell	146.4	123.2	107.7	77.5	61.5	49.9	31.0	24.2	19.6	15.9	13.9	11.3	9.4	5.31
1.80V/cell	187.1	148.9	127.3	91.4	71.6	55.9	33.9	26.0	20.9	17.1	14.9	12.0	10.0	5.36
1.75V/cell	205.6	162.6	136.9	94.9	74.3	58.5	35.1	26.5	21.4	17.5	15.3	12.2	10.1	5.41
1.70V/cell	224.1	173.6	143.9	98.8	77.2	60.4	36.5	27.2	22.0	18.0	15.6	12.4	10.2	5.51
1.65V/cell	241.8	184.6	152.8	104.2	79.2	62.4	37.5	28.4	22.7	18.5	16.0	12.6	10.4	5.58
1.60V/cell	262.5	197.4	162.8	110.0	82.5	64.6	38.8	29.3	23.4	19.1	16.3	12.7	10.5	5.61

Constant Power Discharge (Watts/cell) at 25°C (77°F)

F.V/Time	10 min	15 min	20 min	30 min	45 min	1 h	2 h	3 h	4 h	5 h	6 h	8 h	10 h	20 h
1.85V/cell	273.2	232.3	205.2	148.8	119.0	96.9	60.4	47.2	38.4	31.3	27.4	22.4	18.7	10.6
1.80V/cell	344.4	276.5	238.8	173.5	137.3	107.9	65.6	50.6	40.8	33.5	29.3	23.7	19.8	10.7
1.75V/cell	373.8	299.1	254.8	179.3	141.8	112.5	67.8	51.4	41.6	34.3	30.1	24.1	20.0	10.8
1.70V/cell	401.7	316.9	266.3	185.8	147.0	115.7	70.3	52.7	42.6	35.1	30.7	24.5	20.2	11.0
1.65V/cell	430.4	334.8	281.5	195.2	150.2	119.2	72.1	54.8	44.0	36.0	31.3	24.8	20.6	11.1
1.60V/cell	459.4	353.8	296.8	204.0	155.1	122.5	74.1	56.2	45.1	37.0	31.9	25.0	20.8	11.2

AGM Battery (12V100AH) | B00417/BAT31-AGM-100A
Dimensions
T11 Terminal
Unit: mm [inches]

Discharge Characteristics

Charging Characteristics (cycle use)

Temperature Effects in Relation to Battery Capacity

Cycle Life in Relation to Depth of Discharge

Self Discharge Characteristics


- A** No supplementary charge required
(Carry out supplementary charge before use if 100% capacity is required.)
- B** Supplementary charge required before use. Optional charging way as below:
 1. Charged for above 3 days at limited current 0.25CA and constant voltage 2.25V/cell.
 2. Charged for above 20 hours at limited current 0.25CA and constant voltage 2.45V/cell.
 3. Charged for 8~10 hours at limited current 0.05CA.
- C** Supplementary charge may often fail to recover the capacity.
The battery should never be left standing till this is reached.