



  
**AGM Battery  
(12V33AH)**
**B00418/BATU1-AGM-33A**
**Applications**

- Electric tools
- Vehicle in place of walking
- Lawn mowers
- Golf trolleys and golf cart
- Portable apparatus, lights and instruments
- Electric toys
- Illumination light
- Fire alarms
- Portable power
- Wheelchairs
- Medical equipment

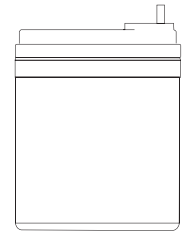
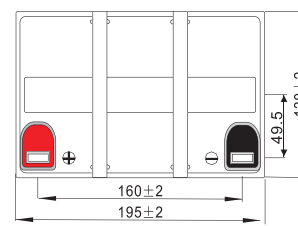
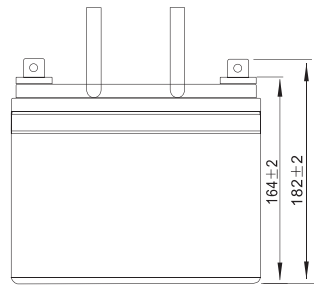
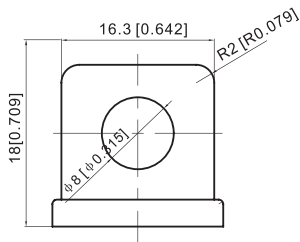
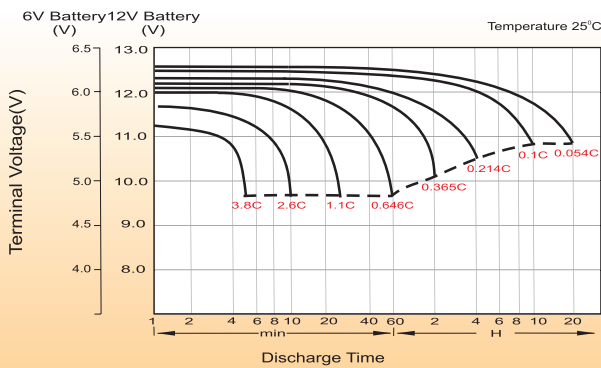
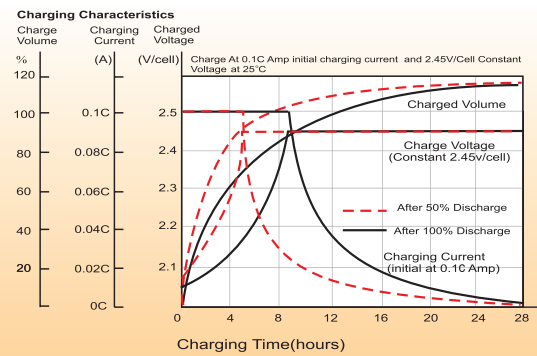
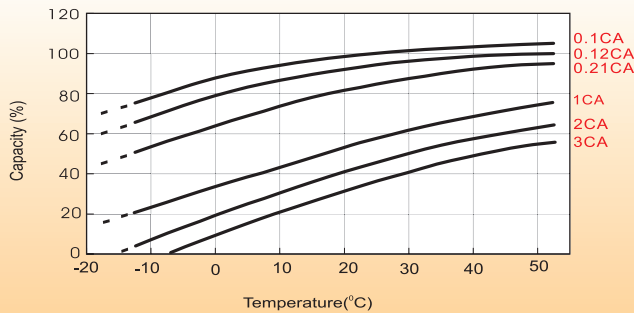
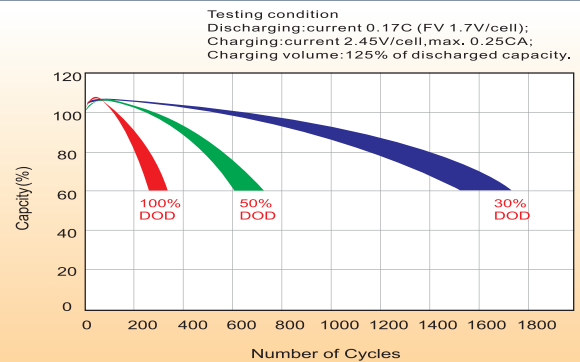
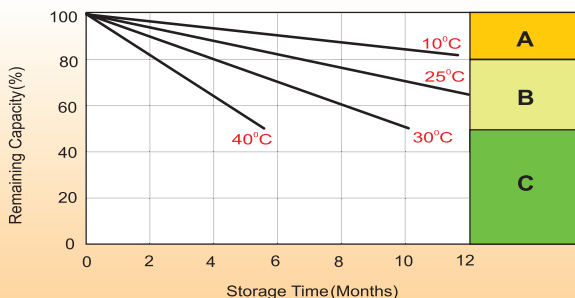
Specification	
Nominal voltage	12V
Nominal capacity (20h)	33 Ah
Dimensions	Length : 195 ± 2 mm (7.68 inches) Width : 130 ± 2 mm (5.12 inches) Container height : 164 ± 2 mm (6.46 inches) Total height (with terminal) : 182 ± 2 mm (7.17 inches)
Weight	Approx. 11.65 kg (25.7 lb)
Terminal	T5
Container material	ABS
Rated capacity	35.4 Ah/1.77 A (20h, 1.80V/cell, 25°C/77°F) 33.0 Ah/3.30 A (10h, 1.80V/cell, 25°C/77°F) 28.9 Ah/5.79 A (5h, 1.75V/cell, 25°C/77°F) 26.2 Ah/8.75 A (3h, 1.75V/cell, 25°C/77°F) 21.3 Ah/21.3 A (1h, 1.60V/cell, 25°C/77°F)
Max. discharge current	495 A (5s)
Internal resistance	Approx. 11 mΩ
Operating temperature range	Discharge : -15~50°C (5~122°F) Charge : 0~40°C (32~104°F) Storage : -15~40°C (5~104°F)
Nominal operating temp. range	25 ± 3°C (77 ± 5°F)
Cycle use	Initial charging current less than 9.9 A. Voltage 14.4V~15.0V at 25°C (77°F) Temp. Coefficient -30mV/°C
Standby use	No limit on initial charging current voltage 13.5V~13.8V at 25°C (77°F) Temp. Coefficient -20mV/°C
Capacity according to temperature	40°C (104°F) : 103% 25°C (77°F) : 100% 0°C (32°F) : 86%
Self discharge	CG Power AGM series batteries may be stored for up to 6 months at 25°C (77°F) and then a freshening charge is required. For higher temperatures the time interval will be shorter.

**Constant Current Discharge (Amperes) at 25°C (77°F)**

F.V/Time	10 min	15 min	20 min	30 min	45 min	1 h	2 h	3 h	4 h	5 h	6 h	8 h	10 h	20 h
1.85V/cell	48.3	40.7	35.5	25.6	20.3	16.5	10.2	7.98	6.46	5.25	4.58	3.74	3.12	1.75
1.80V/cell	61.7	49.1	42.0	30.2	23.6	18.5	11.2	8.59	6.90	5.64	4.91	3.97	3.30	1.77
1.75V/cell	67.8	53.7	45.2	31.3	24.5	19.3	11.6	8.75	7.06	5.79	5.05	4.04	3.33	1.79
1.70V/cell	73.9	57.3	47.5	32.6	25.5	19.9	12.0	8.99	7.24	5.93	5.15	4.09	3.37	1.82
1.65V/cell	79.8	60.9	50.4	34.4	26.1	20.6	12.4	9.37	7.49	6.10	5.27	4.16	3.44	1.84
1.60V/cell	86.6	65.1	53.7	36.3	27.2	21.3	12.8	9.66	7.73	6.30	5.38	4.20	3.47	1.85

**Constant Power Discharge (Watts/cell) at 25°C (77°F)**

F.V/Time	10 min	15 min	20 min	30 min	45 min	1 h	2 h	3 h	4 h	5 h	6 h	8 h	10 h	20 h
1.85V/cell	90.1	76.6	67.7	49.1	39.3	32.0	19.9	15.6	12.7	10.3	9.05	7.40	6.17	3.51
1.80V/cell	113.6	91.2	78.8	57.3	45.3	35.6	21.6	16.7	13.4	11.0	9.67	7.84	6.53	3.53
1.75V/cell	123.3	98.7	84.1	59.2	46.8	37.1	22.4	17.0	13.7	11.3	9.92	7.96	6.59	3.56
1.70V/cell	132.6	104.6	87.9	61.3	48.5	38.2	23.2	17.4	14.1	11.6	10.1	8.07	6.65	3.63
1.65V/cell	142.0	110.5	92.9	64.4	49.6	39.3	23.8	18.1	14.5	11.9	10.3	8.19	6.78	3.67
1.60V/cell	151.6	116.8	97.9	67.3	51.2	40.4	24.4	18.5	14.9	12.2	10.5	8.26	6.85	3.68

**AGM Battery (12V33AH) | B00418/BATU1-AGM-33A**
**Dimensions**
**T5 Terminal**  
Unit: mm [inches]

**Discharge Characteristics**

**Charging Characteristics (cycle use)**

**Temperature Effects in Relation to Battery Capacity**

**Cycle Life in Relation to Depth of Discharge**

**Self Discharge Characteristics**


- A** No supplementary charge required  
(Carry out supplementary charge before use if 100% capacity is required.)
- B** Supplementary charge required before use. Optional charging way as below:
  1. Charged for above 3 days at limited current 0.25CA and constant voltage 2.25V/cell.
  2. Charged for above 20 hours at limited current 0.25CA and constant voltage 2.45V/cell.
  3. Charged for 8~10 hours at limited current 0.05CA.
- C** Supplementary charge may often fail to recover the capacity.  
The battery should never be left standing till this is reached.