

9.1 - ROLLATORS

9.1.1 - STELLA ROLLATOR

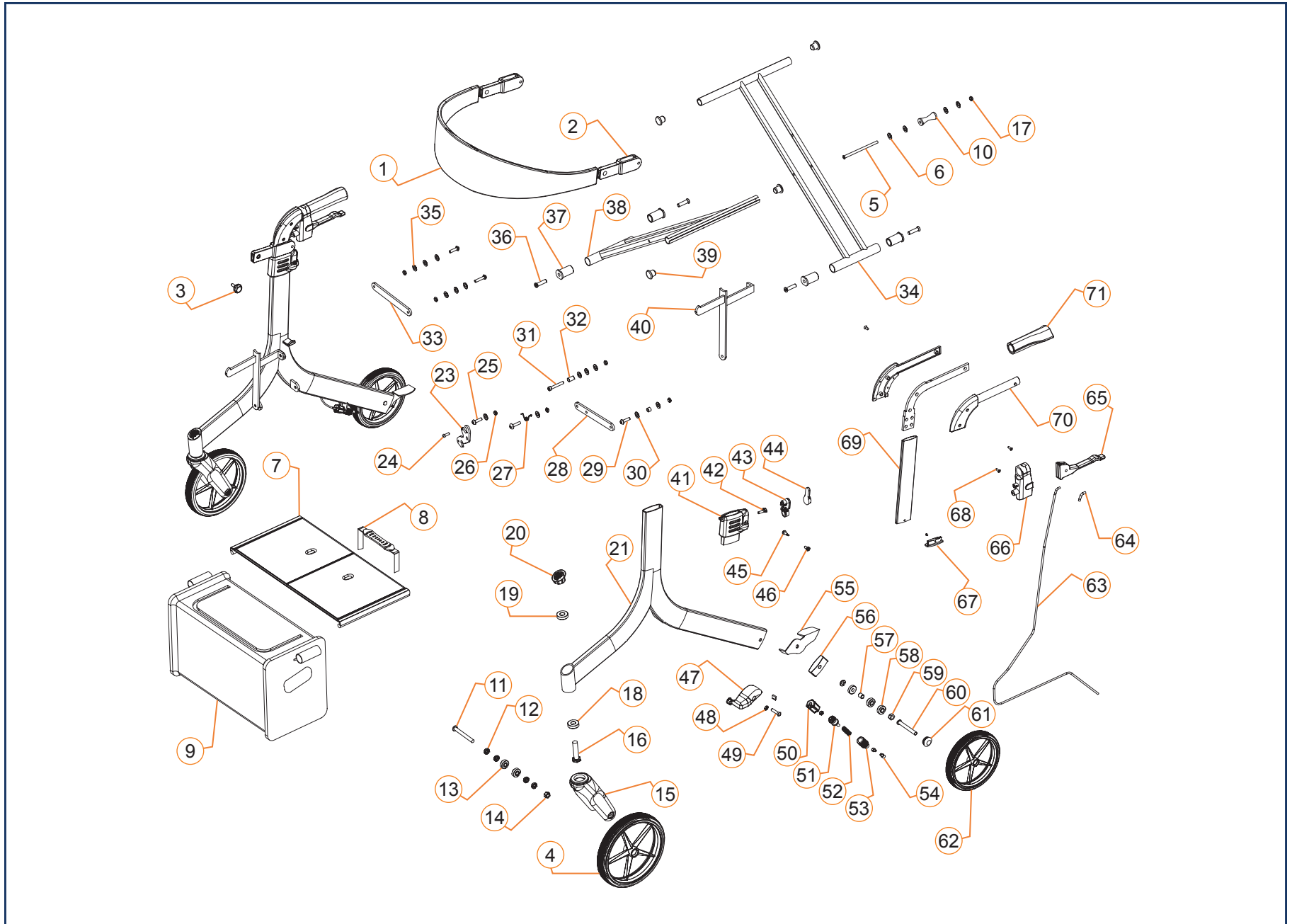
- STELLA ROLLATOR..... 9.1.1.1 A
- STELLA ROLLATOR..... 9.1.1.1 B



<p>LEGEND</p>	<p>CURRENT ✓</p> <ul style="list-style-type: none"> • These parts and assemblies are currently being produced and delivered.* 	<p>SERVICEABLE PARTS ✓</p> <ul style="list-style-type: none"> • These parts and assemblies are not currently being produced or delivered on new chairs, but they are available as replacement service parts.* 	<p>DISCONTINUED ✗</p> <ul style="list-style-type: none"> • These parts and assemblies are no longer being produced or delivered on new chairs, and they are not available as replacement service parts.*
----------------------	---	---	--

* Please contact Technical Support for information on the replacement parts and assemblies.

STELLA ROLLATOR - SECTION 9.1.1



STELLA ROLATOR			
PART #	ITEM #	DESCRIPTION	EFFECTIVE
1001287	1A,2,3	BACK STRAP ASSEMBLY STD	2018-01-05
1000943	1B,2,3	BACK STRAP ASSEMBLY HD	2018-01-05
1000944	3	PLASTIC KNOB FOR BACK STRAP -GRAY	2018-01-05
1000952	7A,39	SEAT SLING FOR STELLA - STD 17.5" WIDE, INCL. HDW	2018-01-05
1000954	7B,39	SEAT SLING FOR STELLA - HD 19.5" WIDE, INCL. HDW	2018-01-05
1000955	8	RELEASE SEAT STRAP	2018-01-05
1000956	8,23A-27	RELEASE SEAT STRAP TO UNLOCK STELLA, 18"	2018-01-05
1000965	8,23B-27	RELEASE SEAT STRAP TO UNLOCK STELLA, 20"	2018-01-05
1000978	8,23C-27	RELEASE SEAT STRAP TO UNLOCK STELLA, 23"	2018-01-05
1001033	4,13	8" WHEEL ASSEMBLY - FRONT	2018-01-05
1001053	15,16,18-20	FRONT FORK ASS'Y	2018-01-05
1001102	11,12,14	FRONT WHEEL AXLE ASS'Y	2018-01-05
1001208	57,58,59,61,62	8" WHEEL ASSEMBLY - REAR	2018-01-05
1001209	20	FRONT CASTER 'CG' CHROME CAP	2018-01-05
1001245	39	CROSS-BRACE END CAP	2018-01-05
1001246	63	BRAKE CABLE, INCLUDES CRIMP	2018-01-05
1001249	65	BRAKE HANDLE	2018-01-05
1001250	63A-66A	BRAKE HANDLE CABLE ASSEMBLY, LEFT	2018-01-05
1001251	63B-66B	BRAKE HANDLE CABLE ASSEMBLY, RIGHT	2018-01-05
1001253	47A-54A	BRAKE ASSEMBLY, LEFT	2018-01-05
1001254	47B-54B	BRAKE ASSEMBLY, RIGHT	2018-01-05
1001255	71	ERGONOMIC HAND GRIPS INCLUDED REFLECTOR	2018-01-05
1001288	41-46	PUSH HANDLE ADJUSTMENT BUTTON ASSEMBLY	2018-01-05
1001289	55A	CURB CLIMBER, LEFT	2018-01-05
1001290	55B	CURB CLIMBER, RIGHT	2018-01-05
1001291	9A	STELLA BAG STD	2018-01-05
1001292	9B	STELLA BAG HD	2018-01-05
1001293	NOT SHOWN	CANE HOLDER ASSEMBLY	2018-01-05
1001294	NOT SHOWN	CUP HOLDER	2018-01-05
1001295	NOT SHOWN	END RUBBER ON BAG SUPPORT	2018-01-05